

**PROJECT SUBMITTAL**

BUILDING 1100  
CTE SPORTS MEDICINE CLASSROOM REMODEL

HERBERT HOOVER HIGH SCHOOL  
4474 EL CAJON BLVD, SAN DIEGO, CA 92115

**CLIENT:**

**BRANDEN SVIENSON**

T: (858) 657-3400

M: (407) 419-2006

BDSVIENSON@PCL.COM

10/03/2022

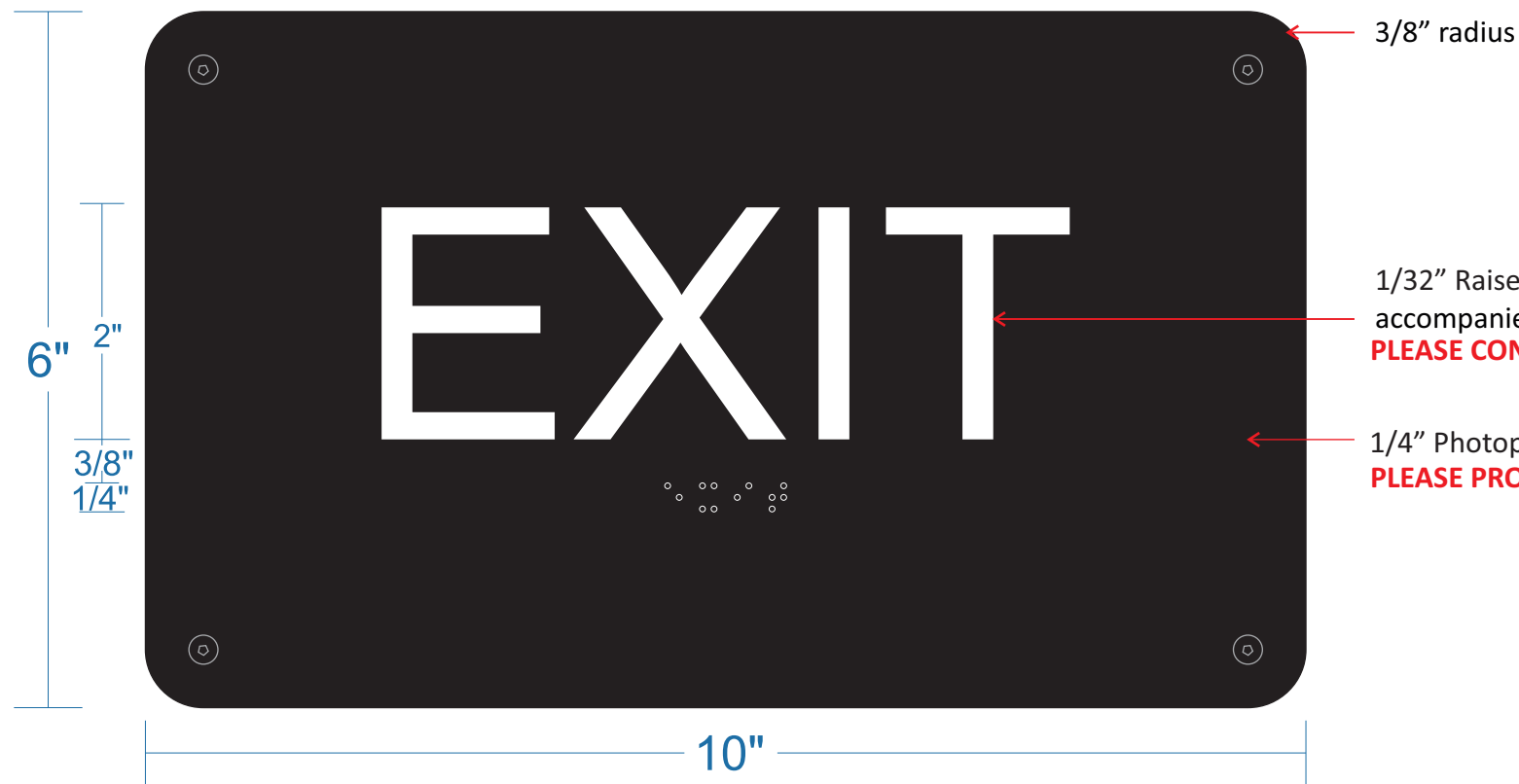


MBE, CERTIFIED. CA CONTRACTOR LICENSE #866041  
WWW.SIGNPROCOMPANY.COM

**Address:** 2498 Roll Dr. #716, San Diego CA 92154  
**Email:** os@signprocompany.com  
**Ph.** 619.427.4500  
**Fax:** 619.427.4501

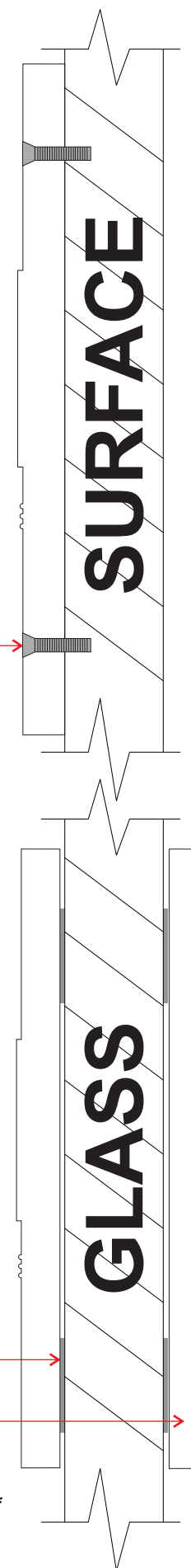
# TACTILE EXIT SIGN

GLASS: 2 WALL: 1



Mounted to wall with (4) #12 x 1 1/4" s.s. tamper proof flat head screws and construction adhesive painted to match sign face

## SIDE VIEW



Mounted with 3M double side tape

Corresponding sign type on back  
*see location maps for reference*

*Signs mounted on glass will not have screw holes\**

Colors represented in this drawing are for presentation purposes only. They may not match your finished product perfectly. Color call-outs are for a match as close as possible.

This original design is the sole property of Sign Production. It cannot be reproduced, copied or exhibited in whole or part, without first obtaining written consent from Sign Production.

**Project Submittal:**

**HOOVER HS  
SPORTS MEDICINE**

**Client:**

PCL CONSTRUCTION

**Designer:**

Alejandra Izquierdo

**Presented by:**

Jorge Briseño

**Submittal date:**

10/03/2022

**Revision date:**

1 06/29/2022

2

3

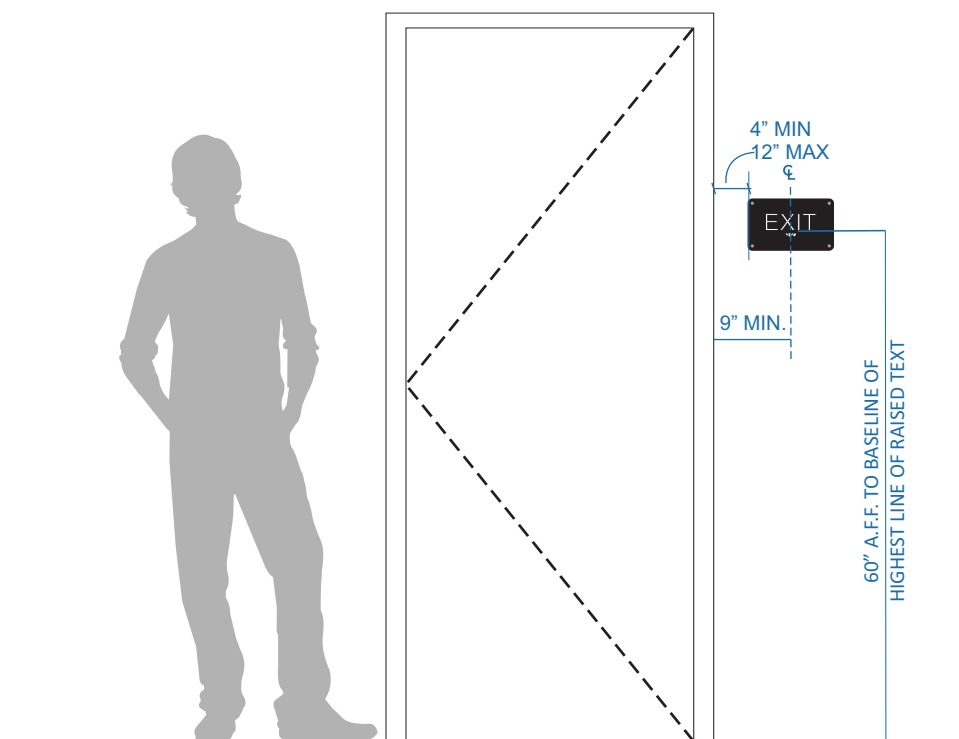
4

**Approval Date:**

**Installation Date:**

**Signature:**

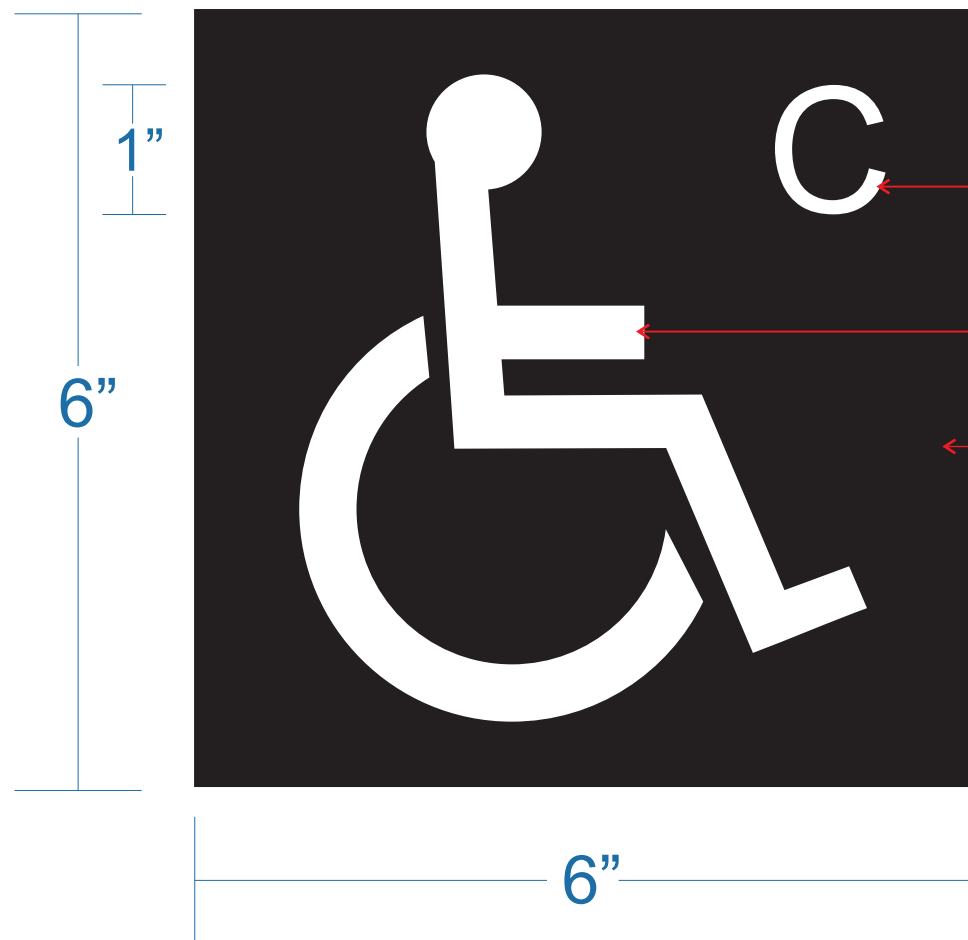
**Page:**



## INSTALLATION

# INTERNATIONAL ACCESSIBILITY ICON

QTY. 1

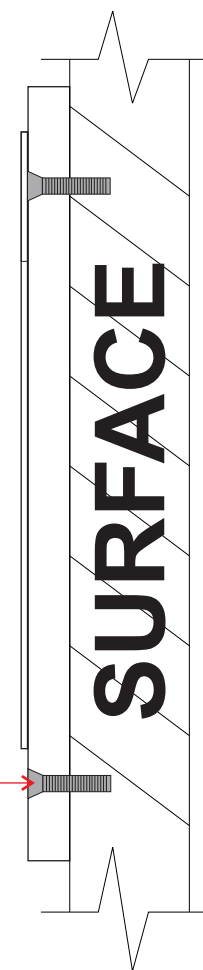


1/32" Raised symbol and letter color **White**, font: **Arial**  
**PLEASE CONFIRM COLOR AND FONT**

1/4" Photopolymer painted color **XXXX**  
**PLEASE PROVIDE COLOR**

Mounted to wall with (4) #12 x 1 1/4" s.s. tamper proof flat head screws and construction adhesive painted to match sign face

SIDE VIEW



Colors represented in this drawing are for presentation purposes only. They may not match your finished product perfectly. Color call-outs are for a match as close as possible.

This original design is the sole property of Sign Production. It cannot be reproduced, copied or exhibited in whole or part, without first obtaining written consent from Sign Production.

**Project Submittal:**

**HOOVER HS  
SPORTS MEDICINE**

**Client:**

PCL CONSTRUCTION

**Designer:**

Alejandra Izquierdo

**Presented by:**

Jorge Briseño

**Submittal date:**

10/03/2022

**Revision date:**

① 06/29/2022

②

③

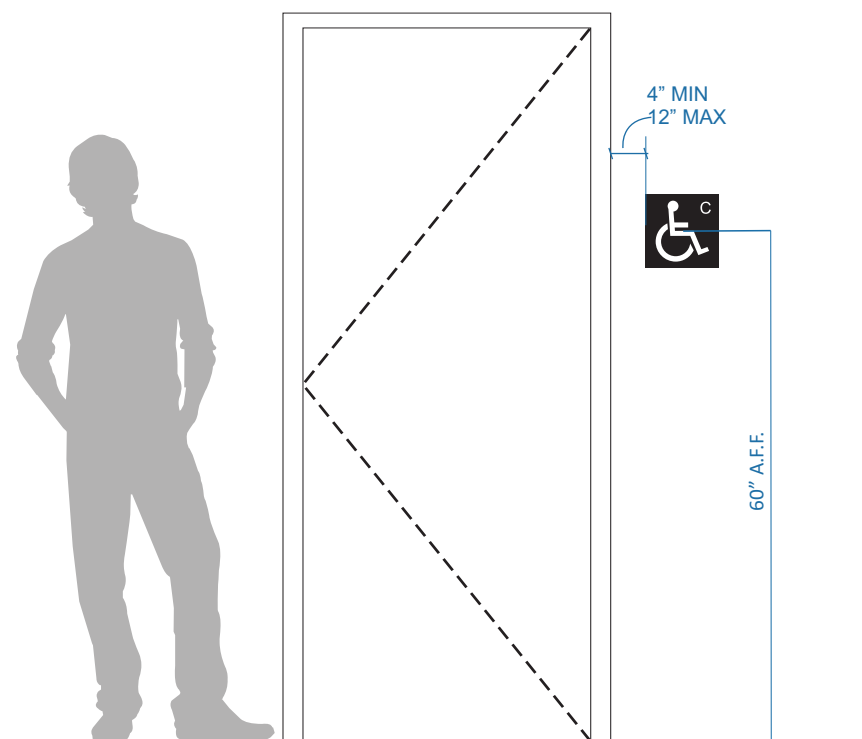
④

**Approval Date:**

**Installation Date:**

**Signature:**

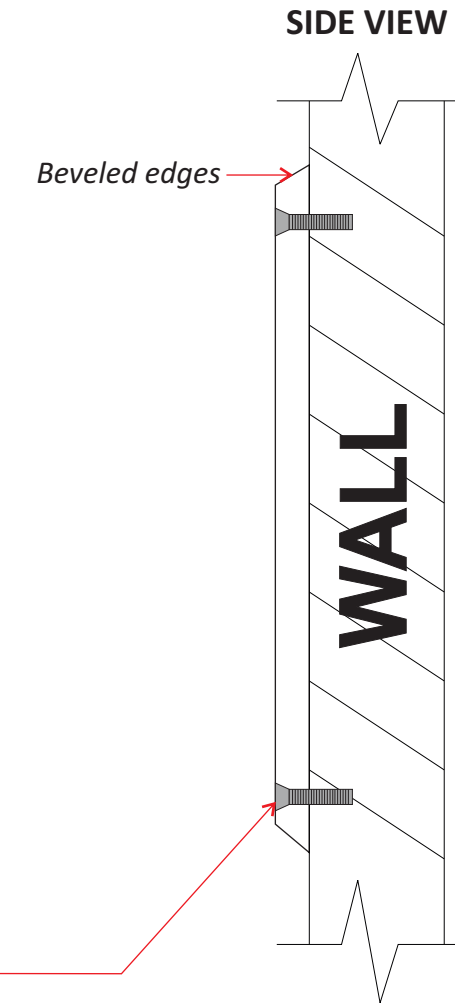
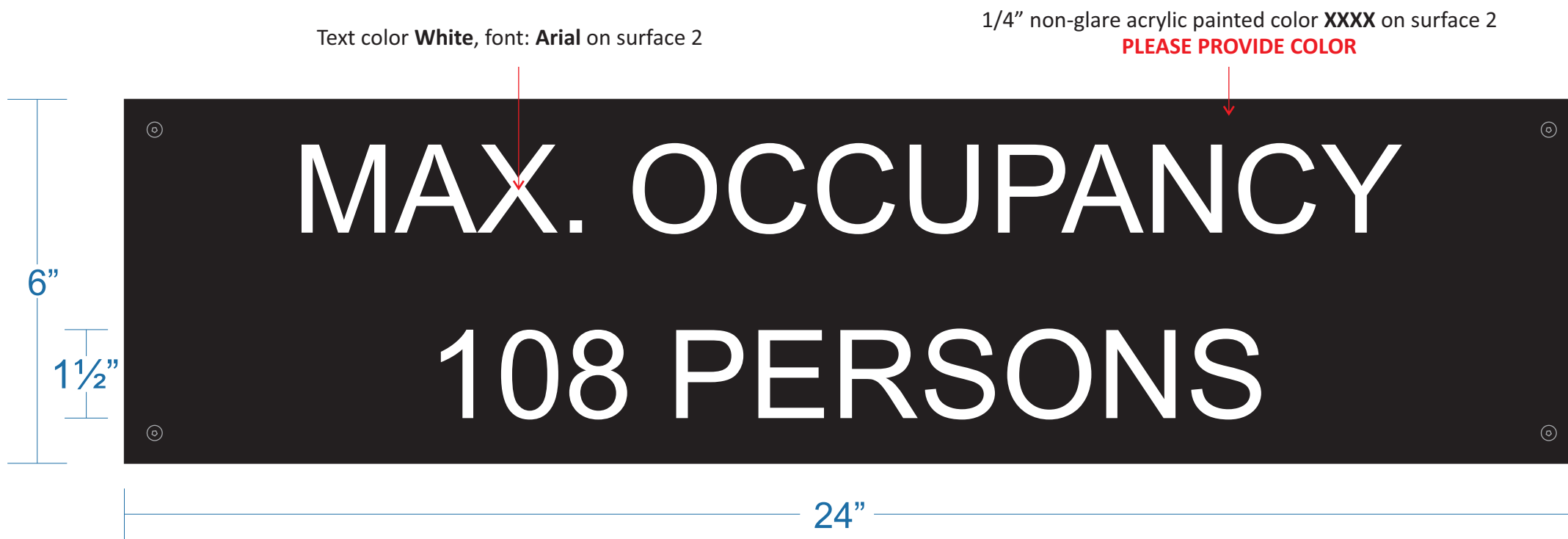
**Page:**



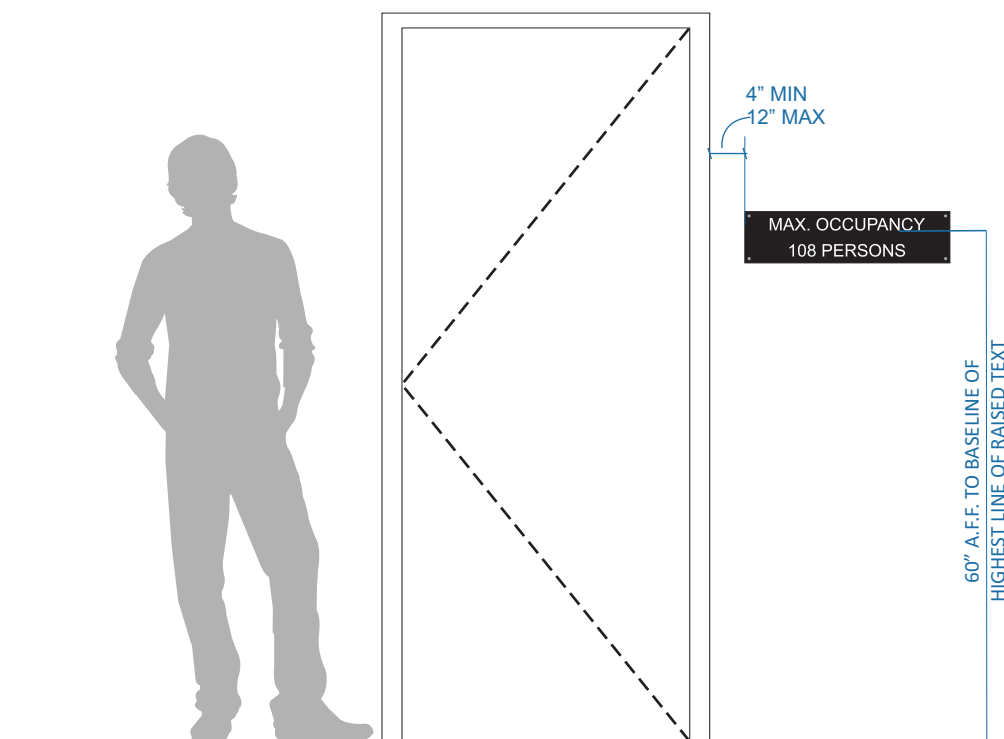
## INSTALLATION

# MAX OCCUPANCY SIGNAGE

QTY. 1



Mounted to wall with (4) #12 x 1 1/4" s.s. tamper proof flat head screws and construction adhesive painted to match sign face



## INSTALLATION

Colors represented in this drawing are for presentation purposes only. They may not match your finished product perfectly. Color call-outs are for a match as close as possible.

This original design is the sole property of Sign Production. It cannot be reproduced, copied or exhibited in whole or part, without first obtaining written consent from Sign Production.

### Project Submittal:

**HOOVER HS  
SPORTS MEDICINE**

### Client:

PCL CONSTRUCTION

### Designer:

Alejandra Izquierdo

### Presented by:

Jorge Briseño

### Submittal date:

10/03/2022

### Revision date:

1 06/29/2022

2

3

4

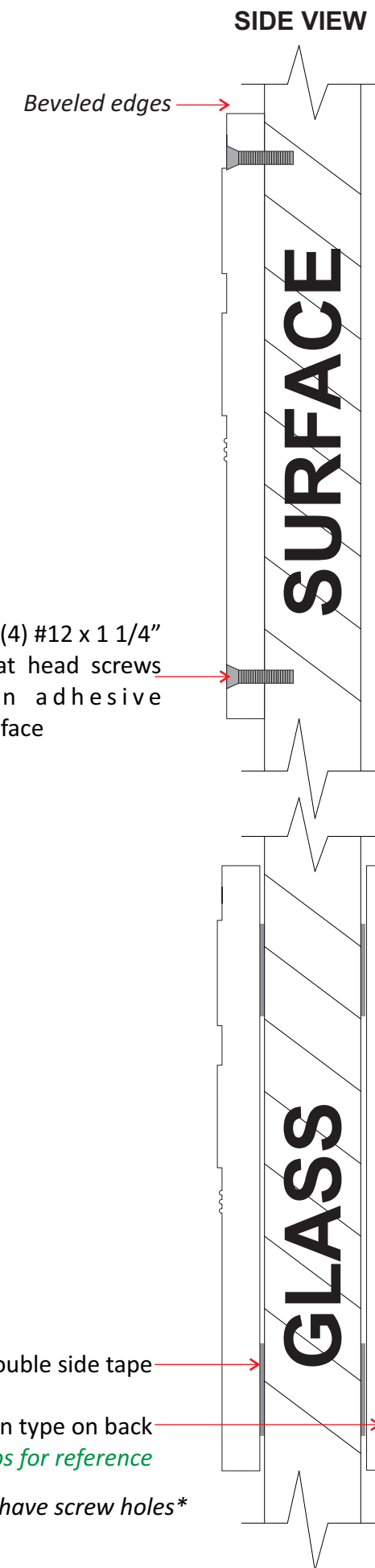
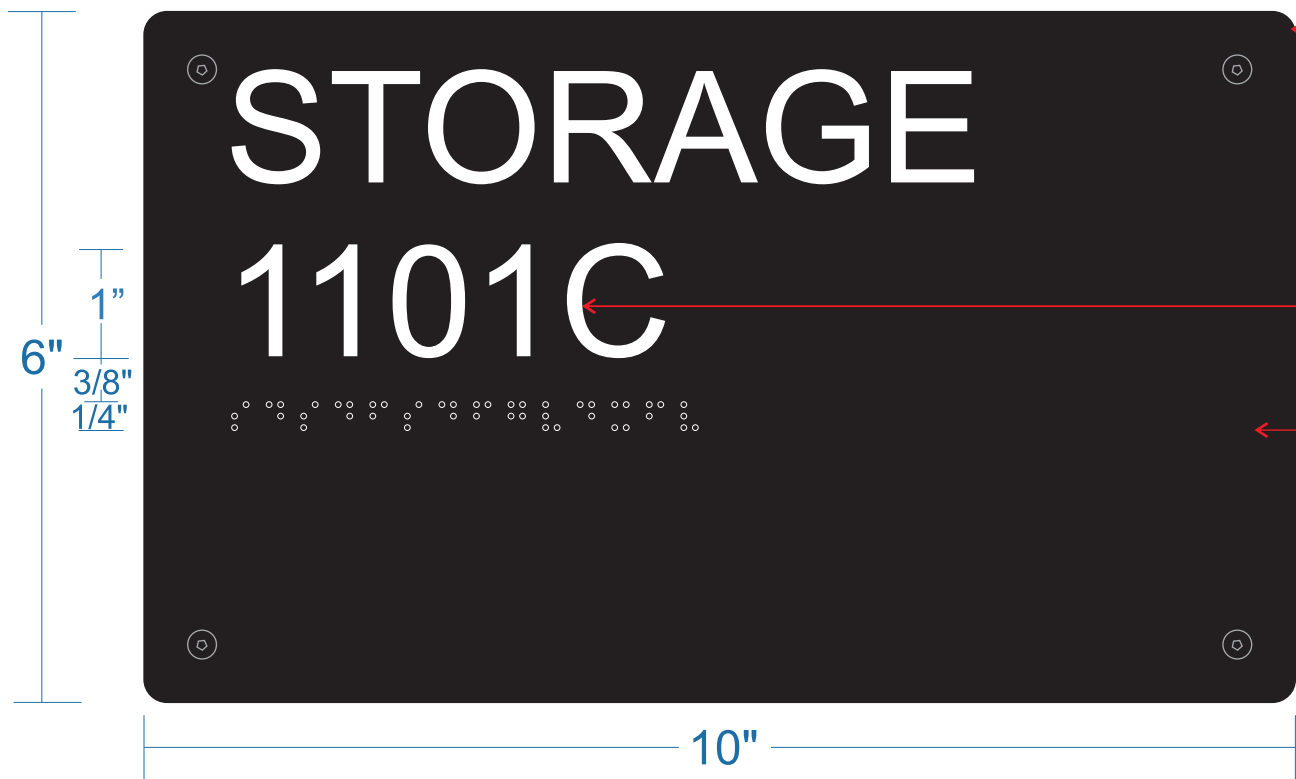
### Approval Date:

### Installation Date:

### Signature:

### Page:

**TYPICAL ROOM SIGNAGE**

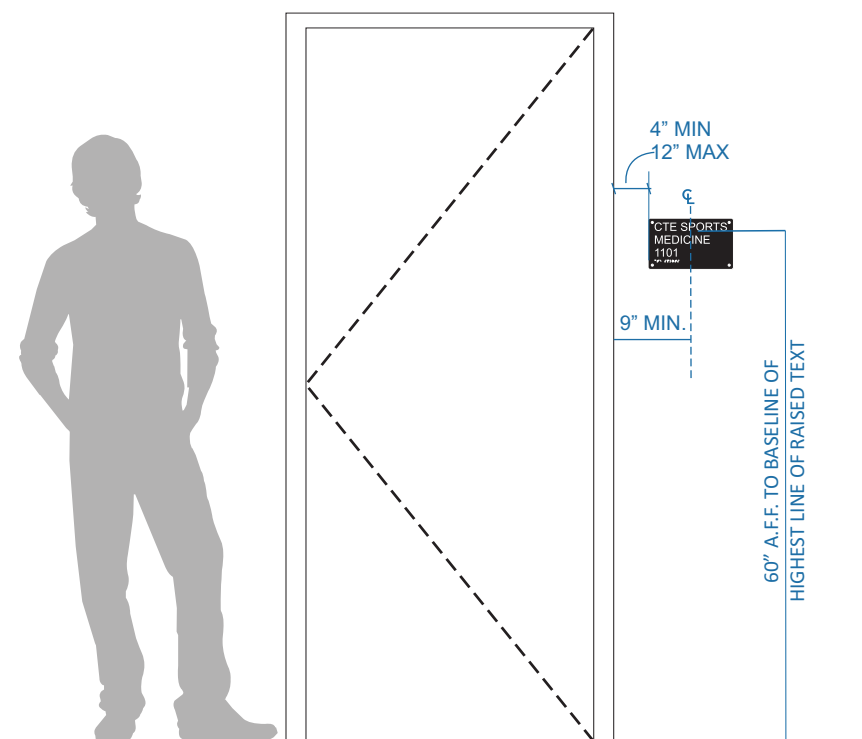


Mounted to wall with (4) #12 x 1 1/4" s.s. tamper proof flat head screws and construction adhesive painted to match sign face

Mounted with 3M double side tape

Corresponding sign type on back  
*see location maps for reference*

*Signs mounted on glass will not have screw holes\**



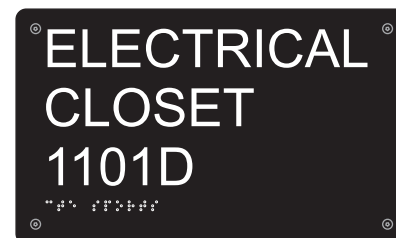
**INSTALLATION**



**WALL: 1**



**WALL: 2  
GLASS: 2**



**WALL: 1**

Colors represented in this drawing are for presentation purposes only. They may not match your finished product perfectly. Color call-outs are for a match as close as possible.

This original design is the sole property of Sign Production. It cannot be reproduced, copied or exhibited in whole or part, without first obtaining written consent from Sign Production.

**Project Submittal:**

**HOOVER HS  
SPORTS MEDICINE**

**Client:**

PCL CONSTRUCTION

**Designer:**

Alejandra Izquierdo

**Presented by:**

Jorge Briseño

**Submittal date:**

10/03/2022

**Revision date:**

1 06/29/2022

2

3

4

**Approval Date:**

**Installation Date:**

**Signature:**

**Page:**

# ASSISTIVE LISTENING SYSTEM SIGNAGE

QTY. 1

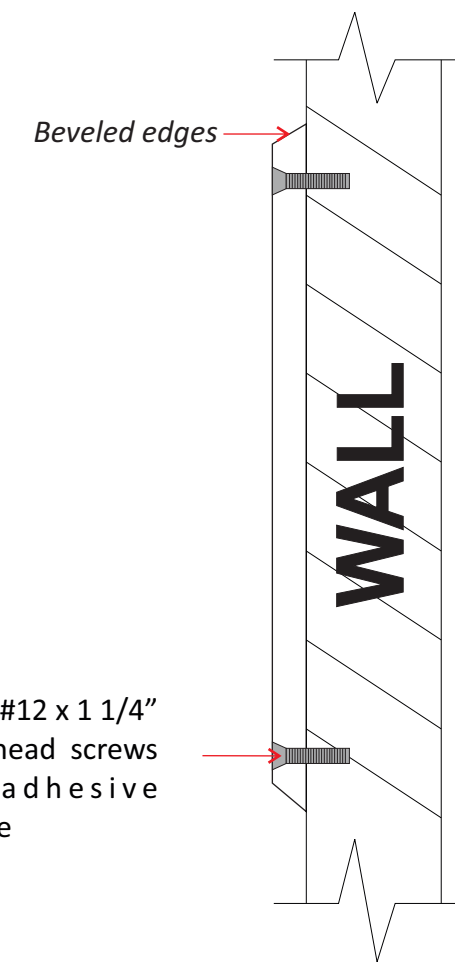


Text and pycogram color **White**, font: **Arial Narrow Bold** on surface 2

1/4" non-glare acrylic painted color: **Federal Blue** on surface 2

Mounted to wall with (4) #12 x 1 1/4" s.s. tamper proof flat head screws and construction adhesive painted to match sign face

## SIDE VIEW



Colors represented in this drawing are for presentation purposes only. They may not match your finished product perfectly. Color call-outs are for a match as close as possible.

This original design is the sole property of Sign Production. It cannot be reproduced, copied or exhibited in whole or part, without first obtaining written consent from Sign Production.

### Project Submittal:

**HOOVER HS  
SPORTS MEDICINE**

### Client:

PCL CONSTRUCTION

### Designer:

Alejandra Izquierdo

### Presented by:

Jorge Briseño

### Submittal date:

10/03/2022

### Revision date:

① 06/29/2022

②

③

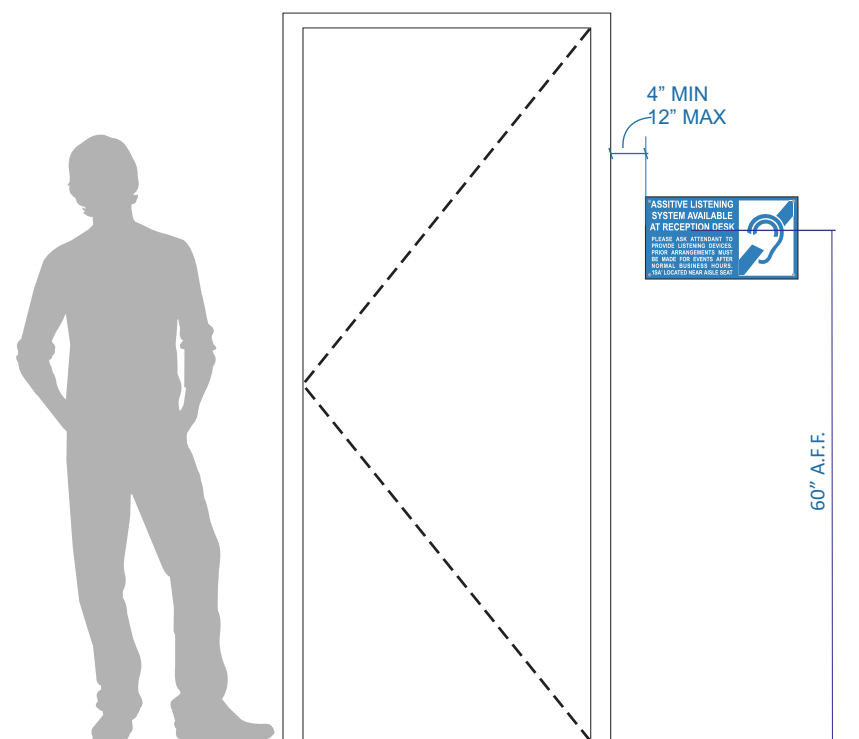
④

### Approval Date:

### Installation Date:

### Signature:

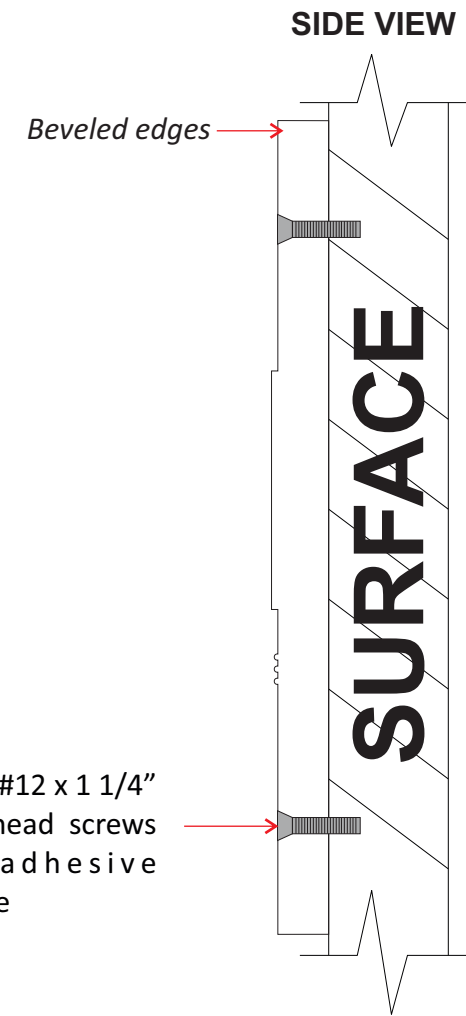
### Page:



## INSTALLATION

**NOT AN ACCESIBLE EXIT SIGN**

QTY. 1



Mounted to wall with (4) #12 x 1 1/4" s.s. tamper proof flat head screws and construction adhesive painted to match sign face

Colors represented in this drawing are for presentation purposes only. They may not match your finished product perfectly. Color call-outs are for a match as close as possible.

This original design is the sole property of Sign Production. It cannot be reproduced, copied or exhibited in whole or part, without first obtaining written consent from Sign Production.

**Project Submittal:**

**HOOVER HS  
SPORTS MEDICINE**

**Client:**

PCL CONSTRUCTION

**Designer:**

Alejandra Izquierdo

**Presented by:**

Jorge Briseño

**Submittal date:**

10/03/2022

**Revision date:**

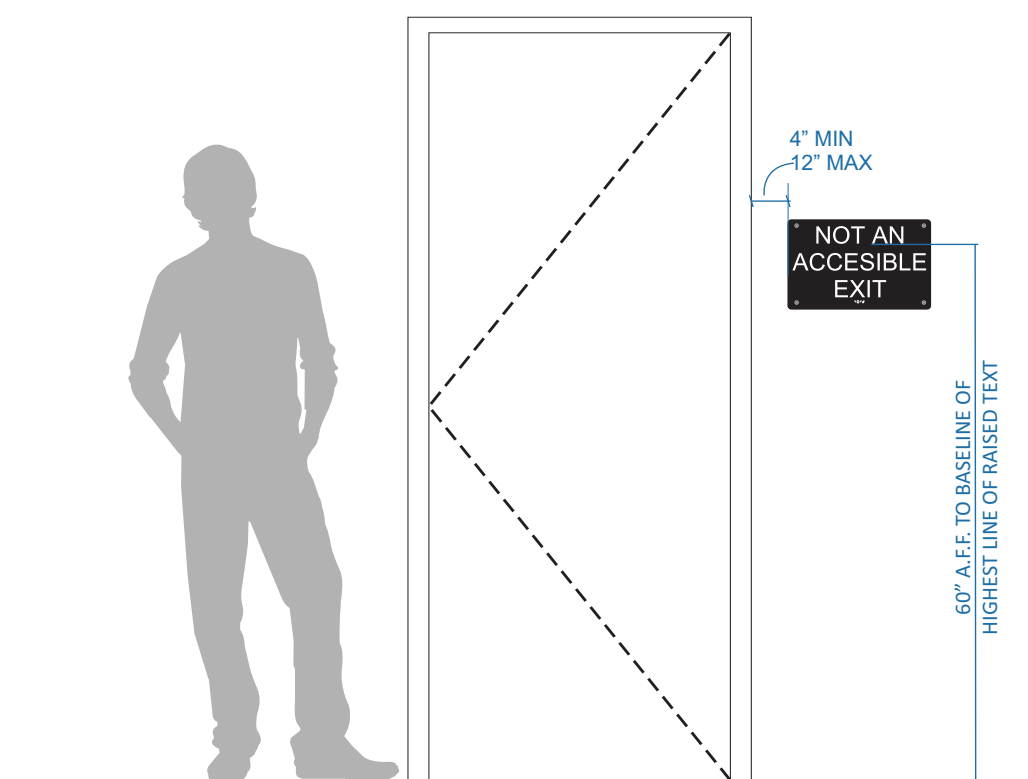
- ① 06/29/2022
- ②
- ③
- ④

**Approval Date:**

**Installation Date:**

**Signature:**

**Page:**



**INSTALLATION**

# ACCESSIBLE ROUTE SIGNAGE

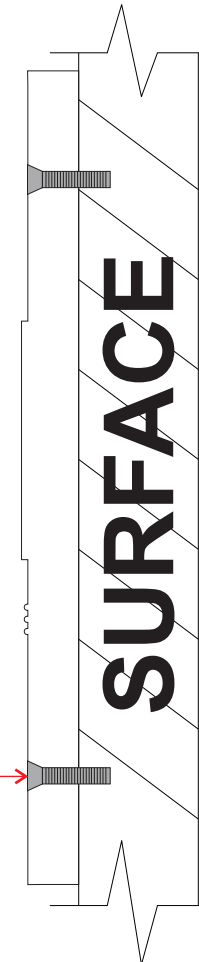
QTY. 1

1/32" Raised text color **White**, font: **Arial**  
accompanied with California Grade 2 Braille  
**PLEASE CONFIRM COLOR AND FONT**

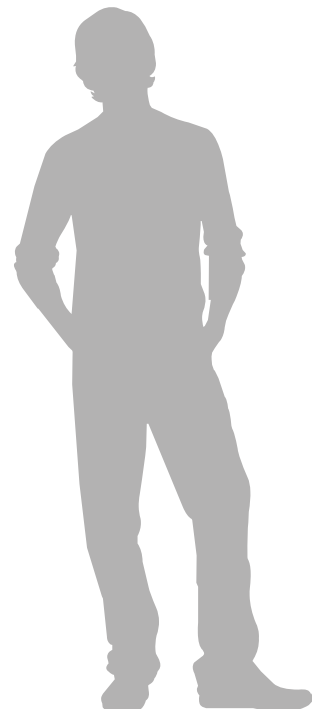
1/4" Photopolymer painted color **XXXX**  
**PLEASE PROVIDE COLOR**



## SIDE VIEW



Mounted to wall with (4) #12 x 1 1/4" s.s. tamper proof flat head screws and construction adhesive painted to match sign face



ACCESSIBLE ROUTE  
LOCATED ON WEST  
SIDE OF THIS BUILDING

60" A.F.F. TO BASELINE OF  
HIGHEST LINE OF RAISED TEXT

## INSTALLATION

Colors represented in this drawing are for presentation purposes only. They may not match your finished product perfectly. Color call-outs are for a match as close as possible.

This original design is the sole property of Sign Production. It cannot be reproduced, copied or exhibited in whole or part, without first obtaining written consent from Sign Production.

### Project Submittal:

**HOOVER HS  
SPORTS MEDICINE**

### Client:

PCL CONSTRUCTION

### Designer:

Alejandra Izquierdo

### Presented by:

Jorge Briseño

### Submittal date:

10/03/2022

### Revision date:

1 06/29/2022

2

3

4

### Approval Date:

### Installation Date:

### Signature:

### Page:

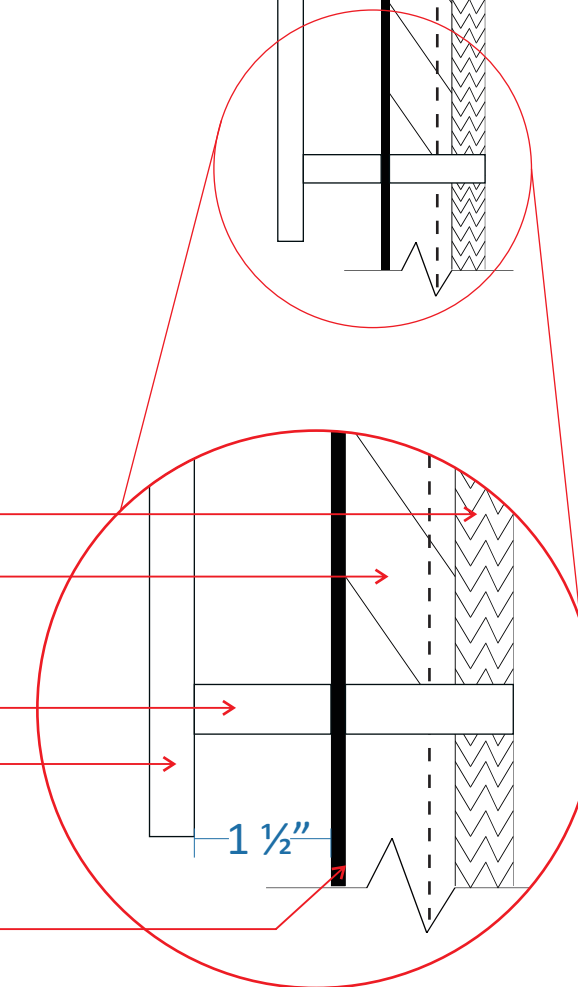
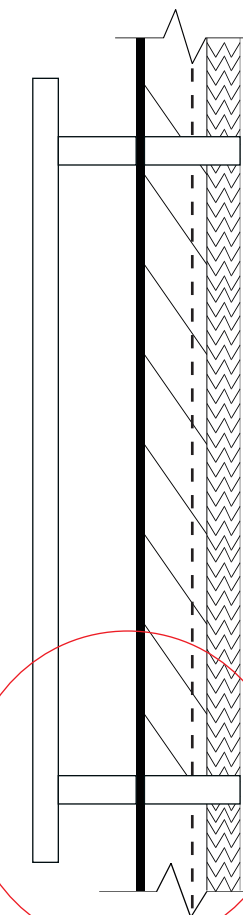


# 14" PLATE CUT LETTERS

1/2" thick plate cut letters, painted color: **PLEASE PROVIDE COLOR** font: GIL SANS MT



## SIDE VIEW



Mounted with studs and spacers to conceal struds, painted color: **PLEASE PROVIDE COLOR**  
 1/2" thick aluminum letters

PATCH AND REPAINT ANY DAMAGE CAUSED BY INSTALLATION OF LETTERS AS REQUIRED - MATCH TEXTURE & COLOR



Colors represented in this drawing are for presentation purposes only. They may not match your finished product perfectly. Color call-outs are for a match as close as possible.

This original design is the sole property of Sign Production. It cannot be reproduced, copied or exhibited in whole or part, without first obtaining written consent from Sign Production.

**Project Submittal:**

**HOOVER HS  
SPORTS MEDICINE**

**Client:**

PCL CONSTRUCTION

**Designer:**

Alejandra Izquierdo

**Presented by:**

Jorge Briseño

**Submittal date:**

10/03/2022

**Revision date:**

- ① 06/29/2022
- ②
- ③
- ④

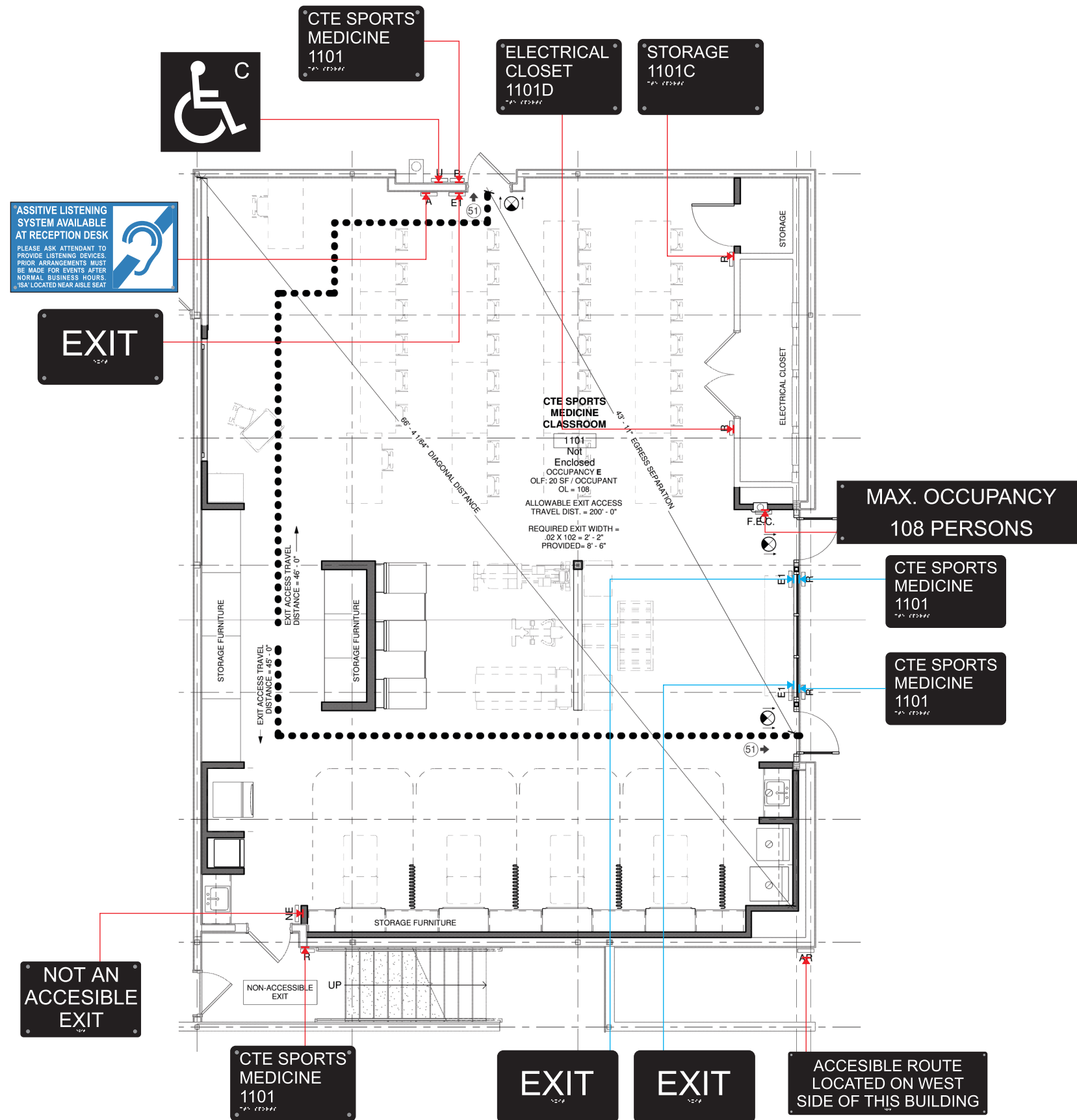
**Approval Date:**

**Installation Date:**

**Signature:**

**Page:**

# LOCATION MAP



Colors represented in this drawing are for presentation purposes only. They may not match your finished product perfectly. Color call-outs are for a match as close as possible.

This original design is the sole property of Sign Production. It cannot be reproduced, copied or exhibited in whole or part, without first obtaining written consent from Sign Production.

**Project Submittal:**

**HOOVER HS  
SPORTS MEDICINE**

**Client:**

PCL CONSTRUCTION

**Designer:**

Alejandra Izquierdo

**Presented by:**

Jorge Briseño

**Submittal date:**

10/03/2022

**Revision date:**

① 06/29/2022

②

③

④

**Approval Date:**

**Installation Date:**

**Signature:**

**Page:**